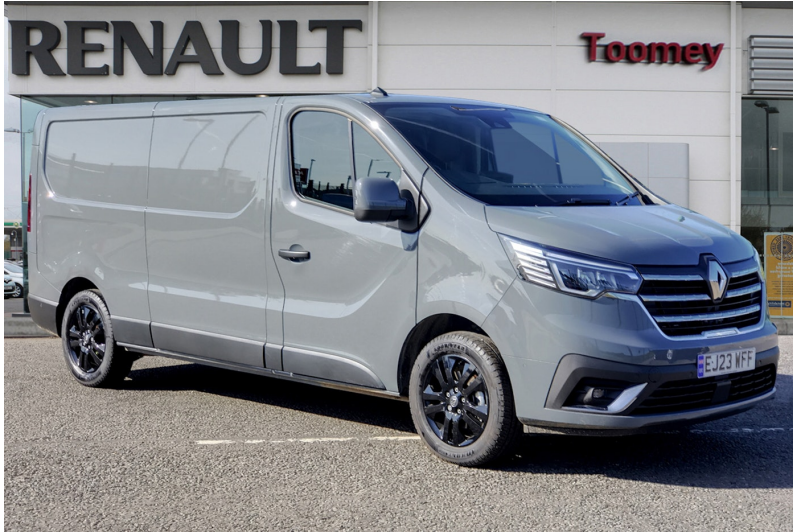




## Renault Traffic Sport

2.0 Dci Blue 30 Sport Panel Van 5dr Diesel Edc Lwb

Price

**£29,999 + VAT**

Mileage

**6487 mi**

Reg/ID

**EJ23WFF**

Engine

**2.0 Diesel**

Transmission

**Automatic**

CO2

**188 g/km**

Economy

**39.2 mpg**

Colour

**Solid - Urban grey**

Location

**Toomey Renault Southend****01702 885738**Automotive Retail Park, Cherry Orchard Way, Rochford,  
Southend-On-Sea, Essex, SS4 1GP

### Features & Specification

**Sat Nav****Parking Sensors****Air Conditioning****Automatic Headlights****Touch Screen Display****Hill Assist****LED Headlights****Alloy Wheels**

#### Driver Convenience

4.2in TFT Colour Driver Information Display, Connected Navigation Services, Cruise Control with Speed Limiter, EASY LINK Navigation with 8in Touchscreen, Parking Sensors - Rear, Power Assisted Steering, Smartphone Integration with Apple CarPlay and Android Auto

#### Exterior Features

Automatic Headlights and Wipers, Body Coloured Door Mirrors - Brilliant Black High Gloss Logo Surround and Premium Chrome Grille, Body Coloured Door Rail, Body Coloured Front Bumper, Body-Coloured Rear Tail Column, Door Mirrors - Power Folding and Heated with Electric Adjustment and External Temperature Sensor, Electric Front Windows - Drivers Side - One Touch - Descending, Front Fog Lights, Full LED Headlights with C-Shape DRL, Rear Tail Light Column and Door Rail - Body Coloured

#### Packs

Visibility Pack

#### Safety

ABS with EBD - Electronic Brake Force Distribution, Active Emergency Braking System - AEBS, Airbags - Driver, ESC - Electronic Stability Control with HSA - Hill Start Assist and Grip Xtend

#### Security

Alarm, Deadlocking, Electronic Engine Immobiliser, Remote Central Locking, Spare Wheel with Anti-Theft Spare Wheel Holder

#### Wheels

17in Alloy Wheels - Avens, Steering Wheel - Rake and Reach Adjustable

#### Other Features

Anchorage Points x18, Bulkhead - Full Steel with Load-Through Facility, Driver Attention Alert, Eco Mode Button, Key - 3 Button with Selective Opening, Left Side Loading Door - Unglazed, Mobile Office, Premium Dashboard with Horizontal Grain and Chrome Styling, Rear Doors - 180 Degree Solid, Roof Bars Fixings, Wide View Mirror